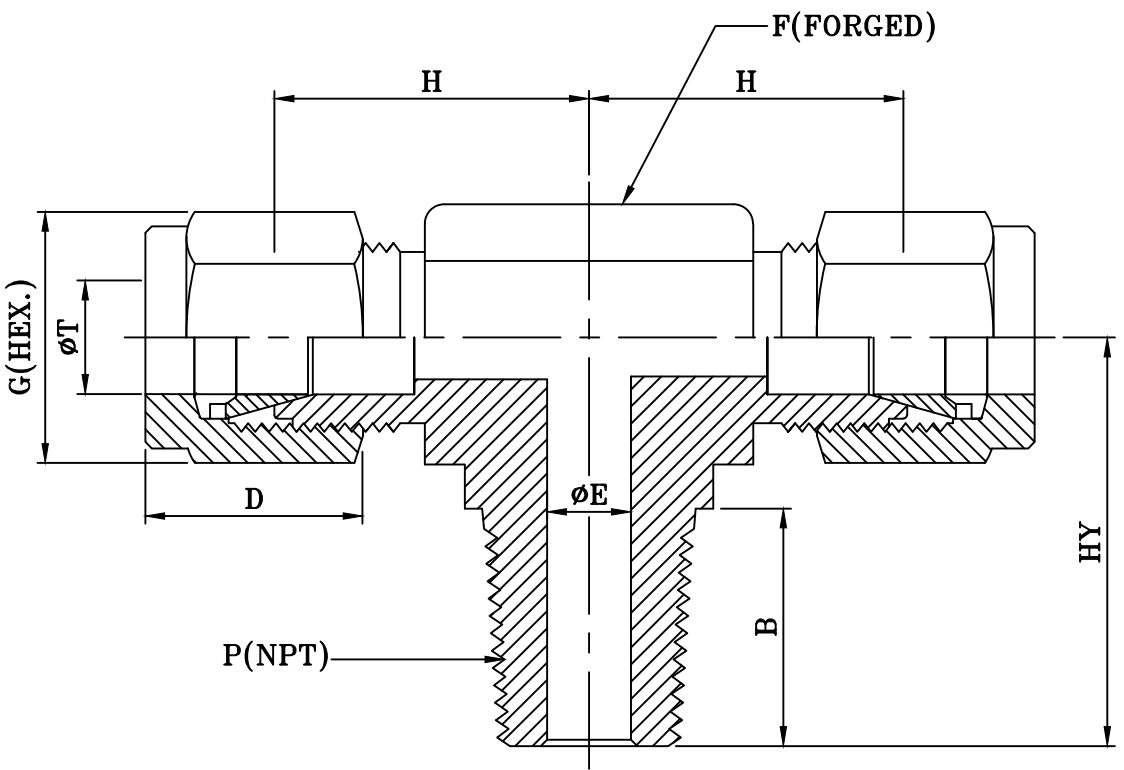


MALE BRANCH TEE



PART NO	P	T	F	G	B	D	E	H	HY
MBT2N2T	1/8"	1/8"	11.1	11.1	9.5	11.0	2.4	17.0	17.8
MBT2N4T	1/8"	1/4"	14.2	14.2	9.5	12.7	4.8	18.8	18.8
MBT4N2T	1/4"	1/8"	14.2	11.1	14.2	11.0	2.4	18.0	23.4
MBT4N4T	1/4"	1/4"	14.2	14.2	14.2	12.7	4.8	19.6	23.4
MBT4N6T	1/4"	3/8"	17.5	17.5	14.2	14.5	7.1	23.1	25.4
MBT6N6T	3/8"	3/8"	17.5	17.5	14.2	14.5	7.1	25.9	28.2
MBT6N8T	3/8"	1/2"	22.2	22.2	14.2	17.5	9.5	25.9	28.2
MBT8N8T	1/2"	1/2"	22.2	22.2	19.0	17.5	10.3	25.9	33.0

NOTES:

1) ALL DIMENSIONS ARE IN MM.  
UNLESS SPECIFIED.  
2) PARTS TO BE FREE FROM BURR.  
3) GENERAL TOLERANCE : ± 1MM.  
4) REF. STD. : ASTM F1387 /  
ASME B1.20.1.

					DATE	BY	CUSTOMER :		
				DRAWN	01.04.10	AL	TITLE : MALE BRANCH TEE		
				CHECKED			<div>Swastik Engg. Works</div> <div>GOREGAON (EAST), MUMBAI-400 063.</div>		
				APPROVAL					
NO	DESCRIPTION	SIGN	DATE						
REVISION				SCALE : NTS			MATERIAL :	DWG. NO : SEW-MBT-N	REV.: